

MYRON TAYLOR HALL

Cornell University - Location Scout
Danielle Darling & Kate Wareham

STUDENT LOUNGE



OFFICE



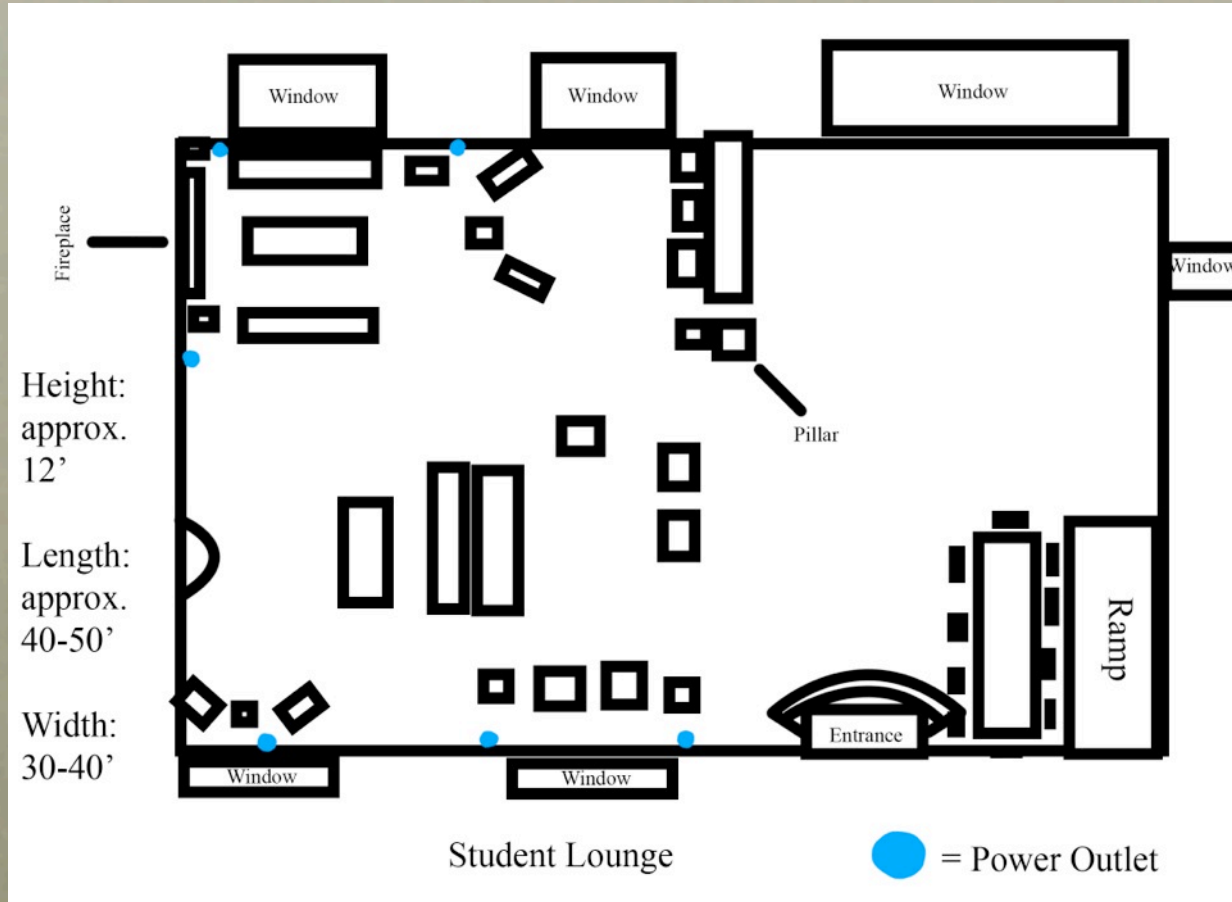
OFFICE OPTIONS



MORE OPTIONS

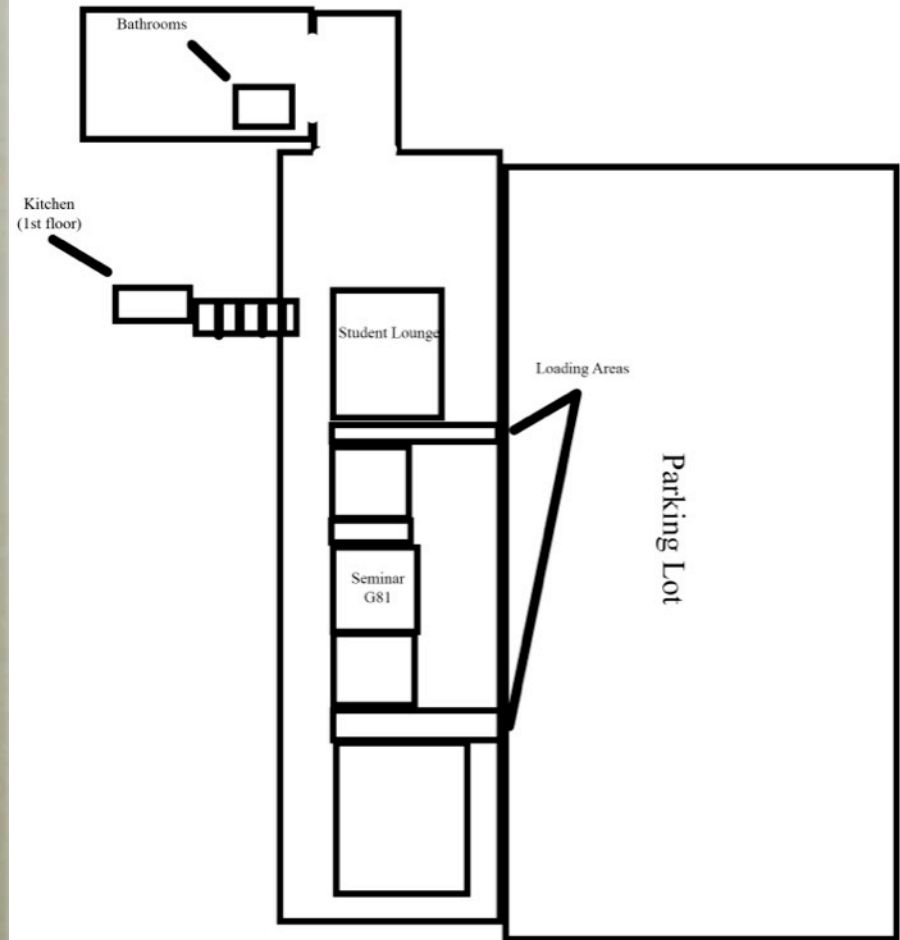


STUDENT LOUNGE / OFFICE MAP



STUDENT LOUNGE SETUP

- Two Load-In Areas
(One with ramp)
- Cast Hold: Classroom G81
- Equipment / Crew Hold:
Another section of Student Lounge
- Dressing, Hair, and MU: G81
- Bathrooms Down the Hall
- Crafty in Kitchen One Floor Above
- Everything except Crafty is on the Ground Floor



EQUIPMENT / CREW HOLDING AREA



CRAFT SERVICES

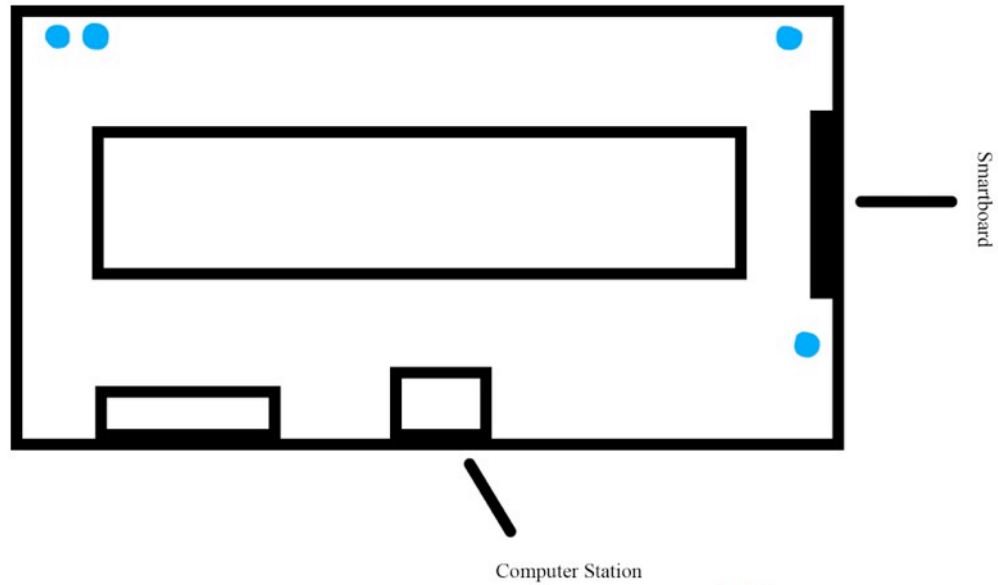


OFFICE CONFERENCE ROOM



G81 CONFERENCE ROOM MAP

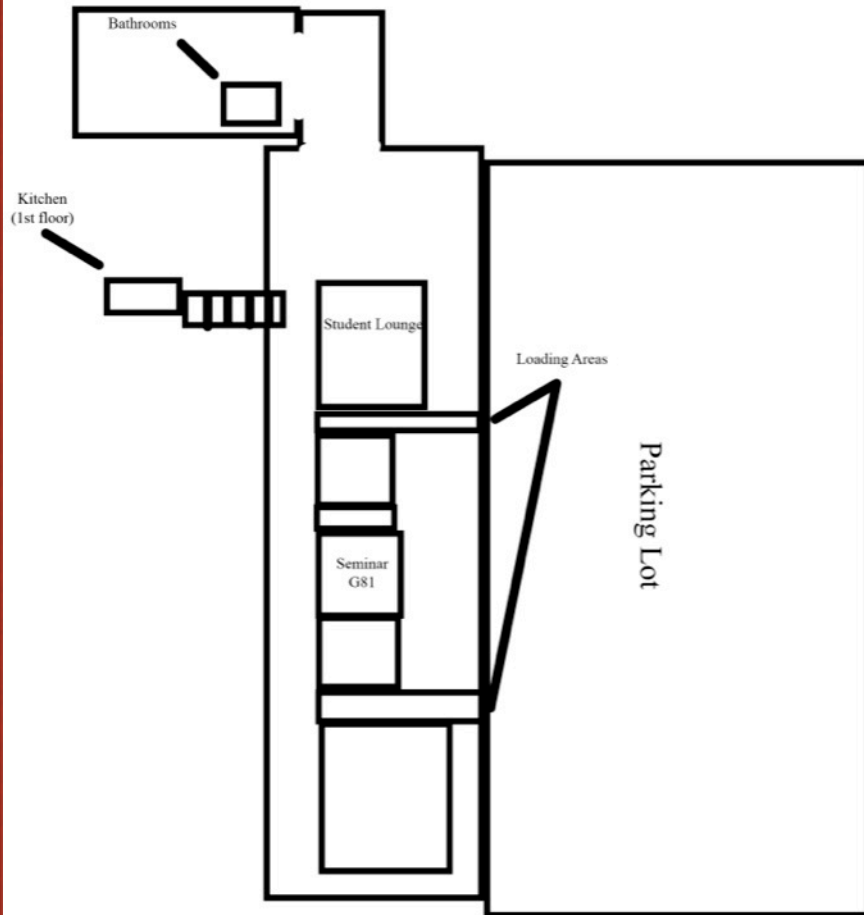
Height: Approx. 10-12'
Length: Approx. 20-25'
Width: Approx. 15'



G-81

● = Power Outlet

G81 SETUP



- Two Load-In Areas
(One with ramp)
- Cast / Equipment / Crew Hold:
Student Lounge
- Dressing, Hair, and MU:
Student Lounge
- Bathrooms Down the Hall
- Crafty in Kitchen One Floor
Above
- Everything except Crafty is on
the Ground Floor

EXTERIOR LOCATION



COURTHOUSE / CHURCH EXTERIOR



EXTERIOR SETUP

- Cast / Equipment / Crew Hold: Student Lounge
(Two Load-In Areas next to Parking Lot)
- Dressing, Hair, and MU: Student Lounge
- Bathrooms Down the Hall
- Crafty in Kitchen One Floor Above
- Everything except Crafty is on the Ground Floor

ADDITIONAL INFORMATION

- Availability -
 - Can shoot Exterior at anytime
 - Interior Locations can be accessed after 9pm on weekdays

- Accessibility -
 - No cost to use the location
 - Schedule for Construction Unknown
 - Cannot hear unwanted noise in Interior Locations